

TIMING SWITCH **1s to 90 min.**

CS3-1

- activates ventilator after switching off the lighting
- easy mounting under the control element



**The switch on occurs immediately
after turning off the lights.**

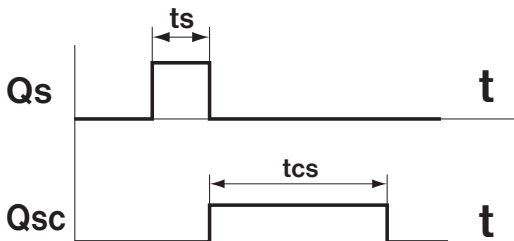
DESCRIPTION

Timer CS3-1 is designed to delayed switch on and off inductive (fans) and resistive (bulbs) load. The switch on of load occurs immediately after switching off the light.

TIME SETTING

Is possible in the range from 1 to 1 hour 30 min. The coarse setting is made by miniature switch according to table and fine setting by trimmer with using of a small screwdriver.

Thanks to special circuit used, a long-term stability of the time set is ensured, without substantial dependence on time, ambient temperature and supply voltage.



t_s = period of lighting

t_c = the time set on CS3-1

$t_{cs} = t_c$

t_{cs} = period of ventilator running

! Note: CS3-1 is not suitable for switching electronic lamps, contactors and LED lights.

Setting the time and installation should be performed on system that is not live and by a person with appropriate qualification in electrical engineering.

Summary of produced types

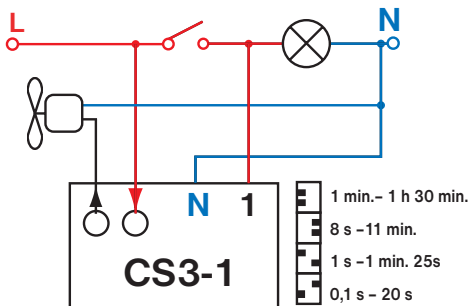
- CS3-1B** activates the ventilator in setting time after switching the light on and deactivates in setting time after switching the light off.
- CS3-2** timing switch for lighting.
- CS3-4** is switched on immediately after pushing the button, but the timing itself starts only after disconnecting - connection without neutral lead.
- CS3-4B** similar to CS3-1B, connection without neutral lead.
- CS3-4M** multifunctional timing switch - connection without neutral lead.
- CS3-16** multifunctional timing switch, for high loads (switching element is relay 16 A!).

CERTIFICATE OF GUARANTEE

(guarantee period for the product amounts to 2 years)




product No.:	date of sale:
examined by:	stamp of shop:

Send the product for guarantee and after-guarantee service to manufacturer's address.



Switches on of ventilator after switching off the lighting.

SPECIFICATIONS

Power supply	230 V/ 50 Hz
Switching element	triac
Input	< 0,5 W
Resistive load	10 to 200 W
Inductive load	10 to 100 VA
Cannot use for loads!    LED	
Max. cross section of inst. Cu cond.	0,5 mm ²
Protection	IP20 and higher according to the mounting
Working temperature	0°C to +50°C



ELEKTROBOCK CZ
MADE IN CZECH REPUBLIC

www.elbock.cz

ELEKTROBOCK CZ s.r.o.

Blanenská 1763

Kuřim 664 34

Tel./fax: +420 541 230 216



LEAD FREE
in compliance with RoHS



PAP